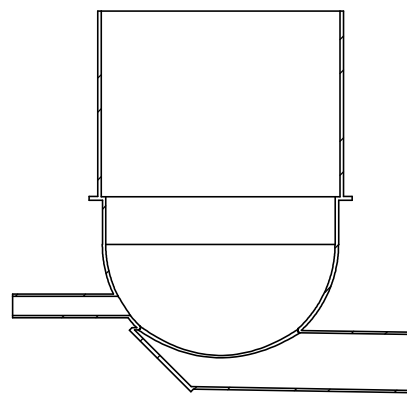
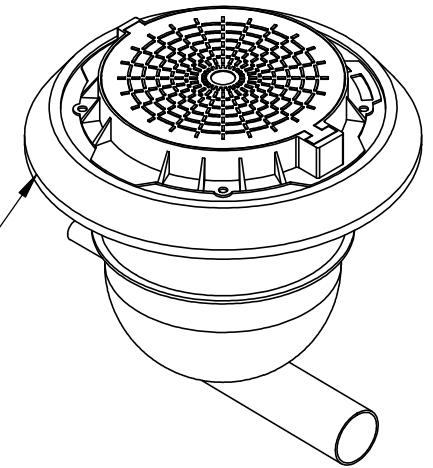
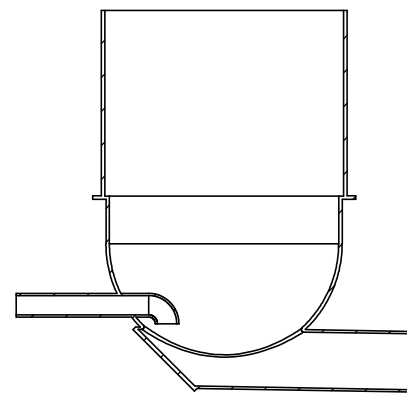


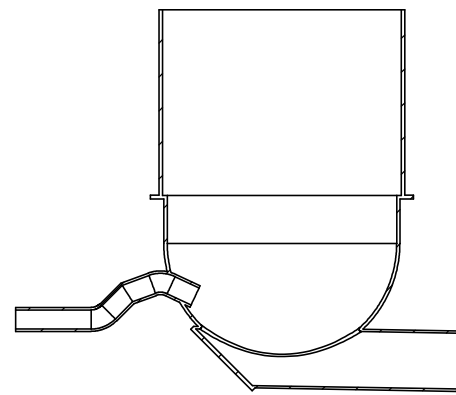
Pre-cast concrete LDR
& DI Cover (typical)



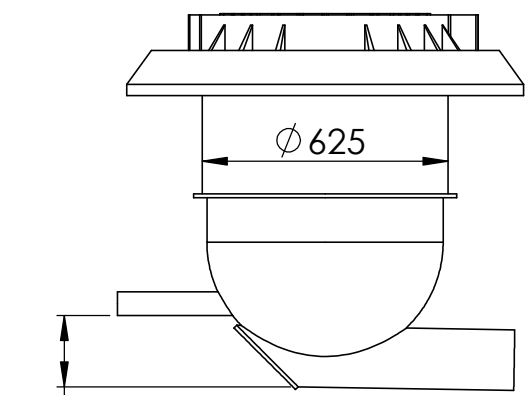
Straight Inlet
SECTION A-A



Straight Inlet with Bend
SECTION B-B



Double-Bend Inlet
SECTION C-C




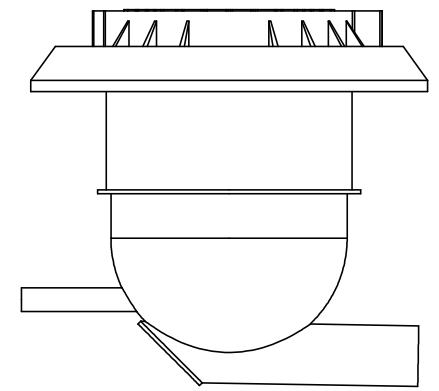
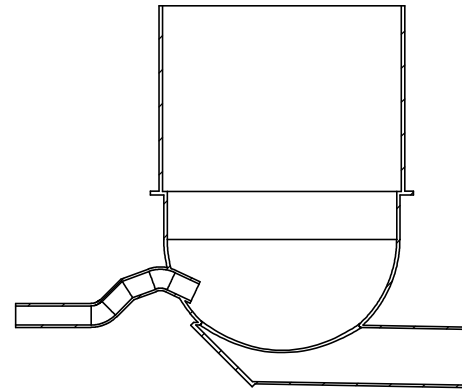
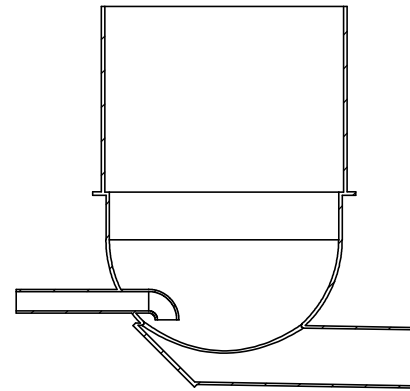
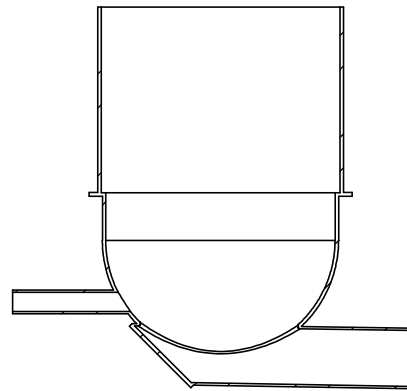
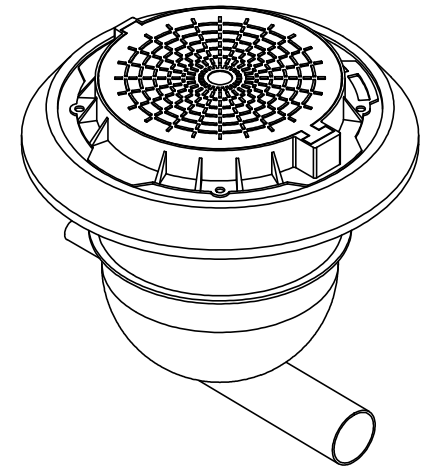
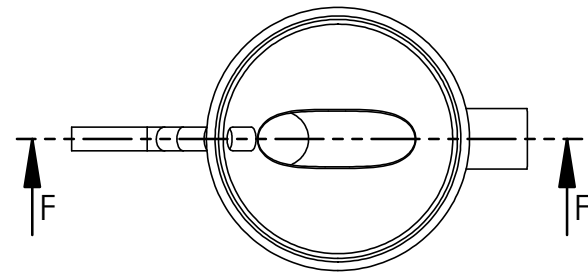
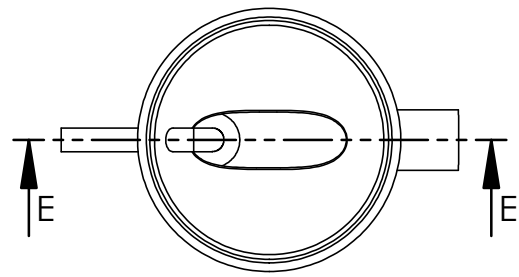
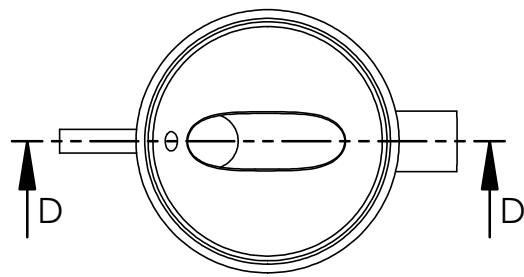
Outlet pipe sized to suit design.
Inlet configuration to suit design.


ROMOLD DN625 discharge maintenance chambers.
Maximum depth to invert is 3m.
Maximum groundwater height is 2m.
Suitable for Class D traffic loading (meeting HN-HO-72).

Made in New Zealand.

Contact us to learn more.
ask.us@australasiamoulding.co.nz

UNLESS OTHERWISE SPECIFIED: DIMENSIONS ARE IN MILLIMETERS SURFACE FINISH: TOLERANCES: LINEAR: ANGULAR:				FINISH:			DEBUR AND BREAK SHARP EDGES			DO NOT SCALE DRAWING		REVISION		1	
											FOR REVIEW				
	NAME		SIGNATURE		DATE										
DRAWN	S.McDonald				02.06.21										
CHK'D															
APPV'D															
MFG															
Q.A						MATERIAL: Polyethylene			DWG NO.					A3	
									DN625 Discharge Chamber						
						WEIGHT: 25kg			SCALE:1:20			SHEET 1 OF 2			



UNLESS OTHERWISE SPECIFIED: DIMENSIONS ARE IN MILLIMETERS SURFACE FINISH: TOLERANCES: LINEAR: ANGULAR:				FINISH:		DEBUR AND BREAK SHARP EDGES		DO NOT SCALE DRAWING		REVISION 1			
								FOR REVIEW					
DRAWN		NAME		SIGNATURE		DATE		 AUSTRALASIA MOULDING LTD		DWG NO. DN625 Discharge Chamber		A3	
CHK'D													
APPV'D													
MFG													
Q.A													
								MATERIAL: Polyethylene					
								WEIGHT: 25kg		SCALE: 1:20		SHEET 2 OF 2	