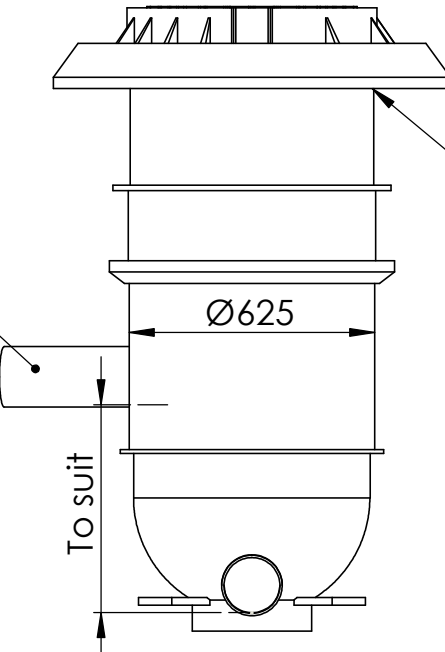
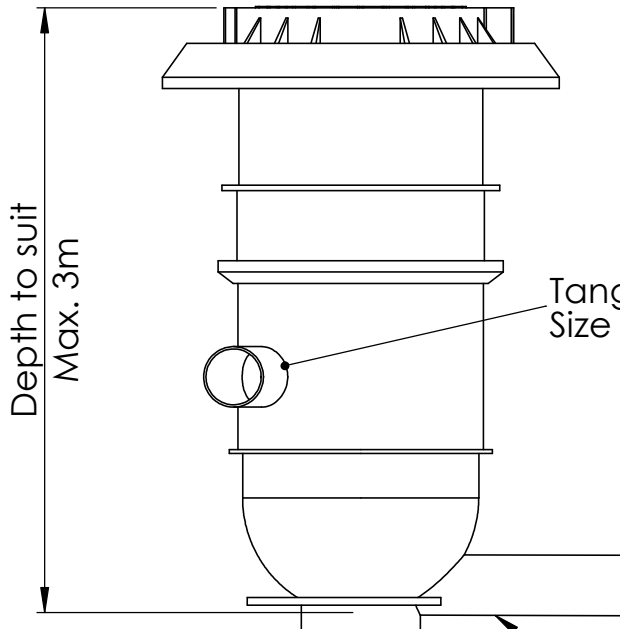
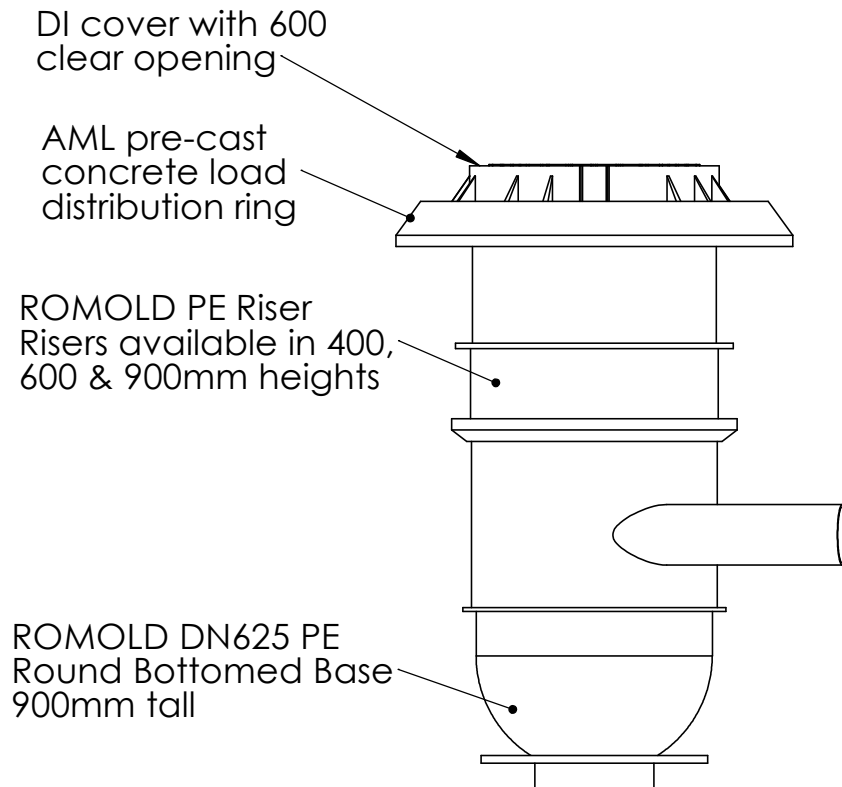
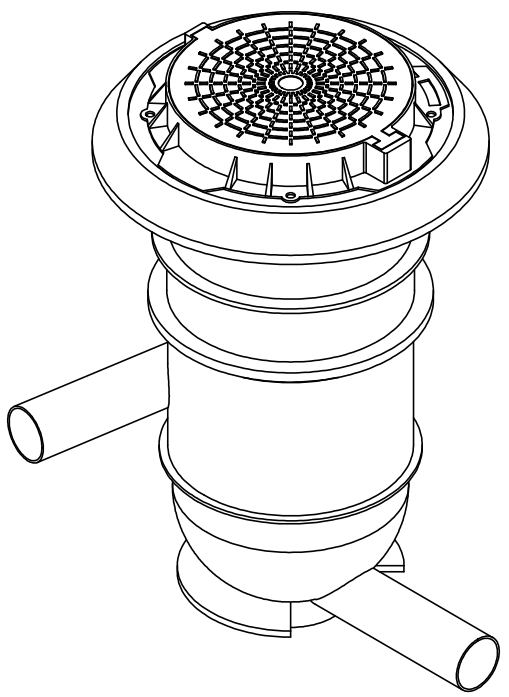
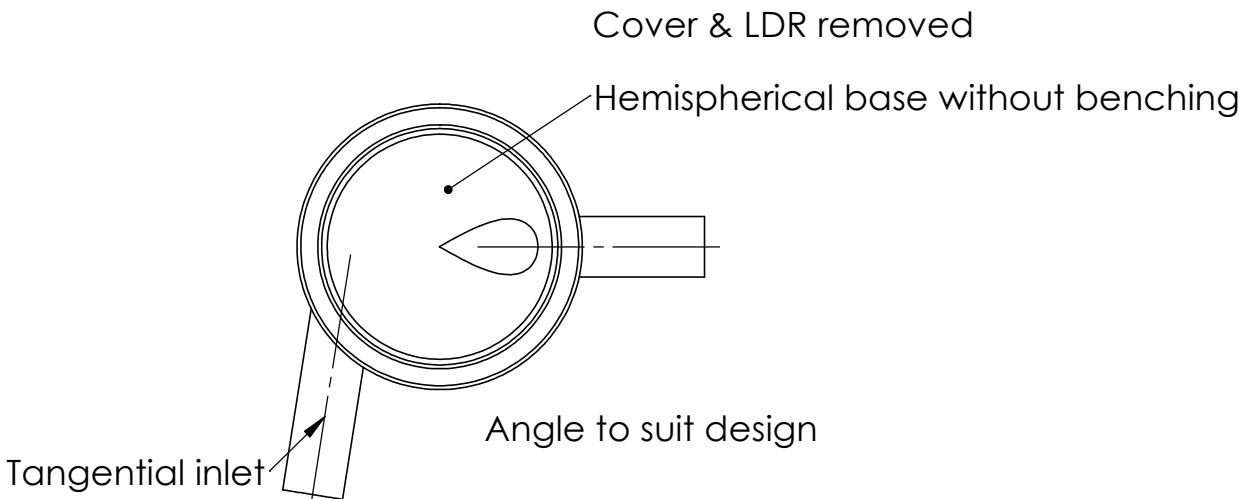



Installation:
Sub grade, Minimum CBR of 5% is recommended

Bedding, AP7-20, 100mm deep, MDD 95%

Backfill, AP20 (heavy on fines), 500mm width
from outside of chamber, compacted in 150 -
250mm layers, MDD 95%, for full height of chamber



ROMOLD DN625 round-bottom maintenance chamber.
Maximum depth to invert is 3m.
Maximum groundwater height is 2m.
Suitable for Class D traffic loading (meeting HN-HO-72).
Bases are built to suit the requirements of the design.
Tangential inlet to allow turbulence and energy dissipation within the chamber.

UNLESS OTHERWISE SPECIFIED: DIMENSIONS ARE IN MILLIMETERS SURFACE FINISH: TOLERANCES: LINEAR: ANGULAR:				FINISH:		DEBUR AND BREAK SHARP EDGES		DO NOT SCALE DRAWING		REVISION 1			
								For Information					
	NAME		SIGNATURE		DATE				 AUSTRALASIA MOULDING LTD				
DRAWN	M.Wake				02.09.25								
CHK'D													
APPV'D													
MFG													
Q.A						MATERIAL: Polyethylene Chamber Concrete LDR DI Cover		DWG NO.		ROMOLD DN625 ECC		A3	
								SCALE:1:20		SHEET 1 OF 2			

