
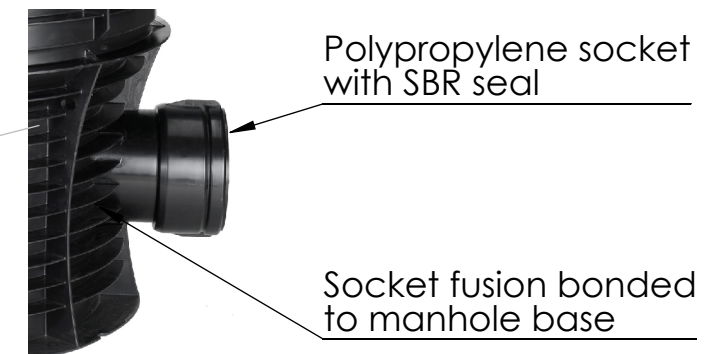
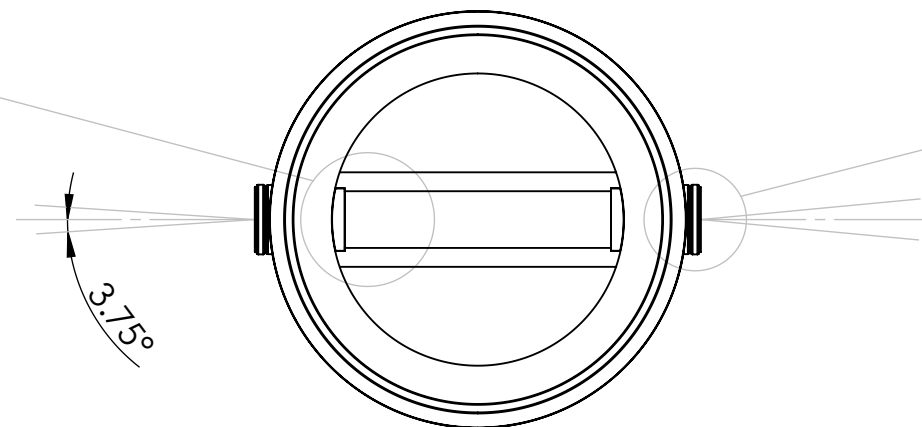


ROMOLD DN1000 manhole chambers are approved to EN 13598-2.  
 Maximum depth to invert is 6m.  
 Maximum groundwater height is 5m.  
 Suitable for Class D traffic loading (meeting HN-HO-72).  
 Bases are applicable for PVC pipe sizes of DN150, DN175, DN225, DN300 & DN375.  
 Pre-benched bases have  $\pm 3.75^\circ$  of angular alignment per socket.  
 Maximum pipe grade for pre-benched base is 6.5%.  
 Fall through pre-benched base is 0.5%.  
 Custom bases are available for larger pipe sizes, different pipe materials or inlet arrangements that are outside of our pre-benched options.

|   |  |      |  |           |  |                                   |  |  |  |                               |  |              |  |
|---|--|------|--|-----------|--|-----------------------------------|--|--|--|-------------------------------|--|--------------|--|
| UNLESS OTHERWISE SPECIFIED:<br>DIMENSIONS ARE IN MILLIMETERS<br>SURFACE FINISH:<br>TOLERANCES:<br>LINEAR:<br>ANGULAR: |  |      |  | FINISH:   |  | DEBUR AND<br>BREAK SHARP<br>EDGES |  | DO NOT SCALE DRAWING   |  | REVISION                      |  | 1            |  |
| GENERAL LAYOUT  |  |      |  |           |  |                                   |  |  |  |                               |  |              |  |
| DRAWN   |  | NAME |  | SIGNATURE |  | DATE                              |  |  AUSTRALASIA<br>MOULDING<br>LTD |  |                               |  |              |  |
| CHK'D   |  |      |  |           |  |                                   |  |  |  |                               |  |              |  |
| APPV'D  |  |      |  |           |  |                                   |  |  |  |                               |  |              |  |
| MFG   |  |      |  |           |  |                                   |  |  |  |                               |  |              |  |
| Q.A   |  |      |  |           |  |                                   |  |  |  |                               |  |              |  |
|   |  |      |  |           |  | MATERIAL:                         |  | Polypropylene  |  | DWG NO.                       |  | A3           |  |
|   |  |      |  |           |  |                                   |  |  |  | ROMOLD DN1000 Manhole Chamber |  |              |  |
|   |  |      |  |           |  |                                   |  |  |  | SCALE:1:20                    |  | SHEET 1 OF 9 |  |

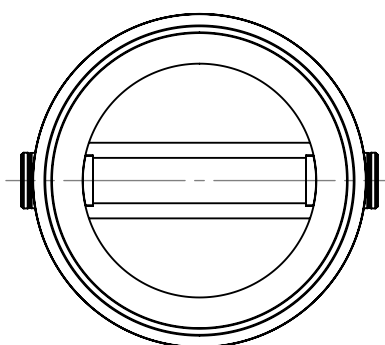
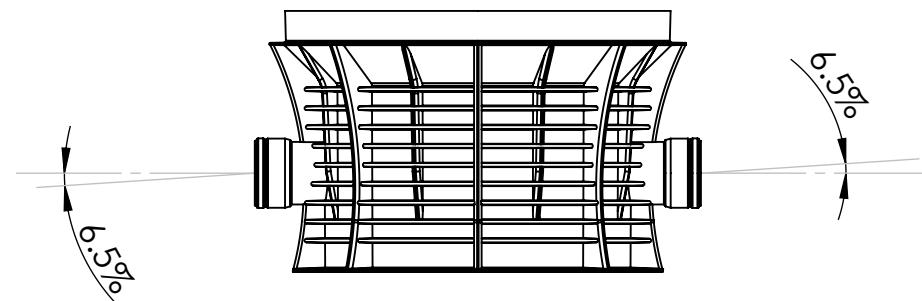


Polypropylene channel and benching liner extrusion welded into base at factory.  
 Deeper than full-pipe channel.  
 Fall through channel (from socket to socket) 0.5% (5mm).  
 Texture on benching for safety.  
 Migration channels for case of surcharge.

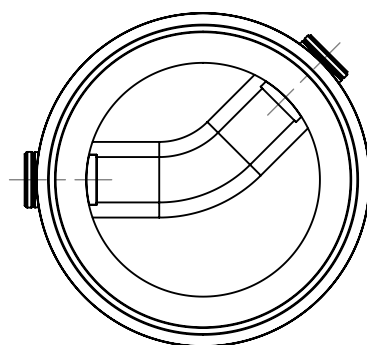


Sockets provide  $\pm 3.75^\circ$  angular tolerance  
 $\pm 7.5^\circ$  over two sockets  
 0 - 6.5% pipe grade

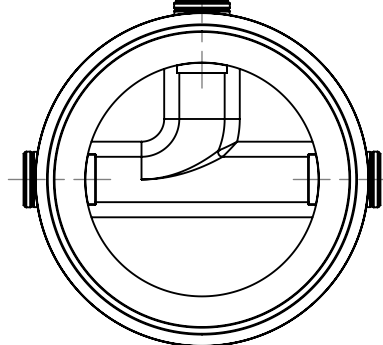
Sockets are designed to accept PVC pipe to AS/NZS 1254 & AS/NZS 1260



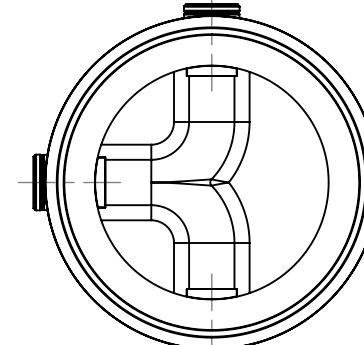
I PP 1 B 100.15/50



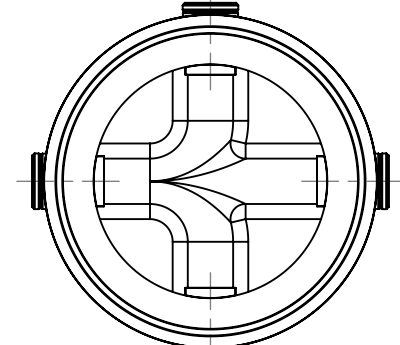
I PP 1 BB 100.15/50-135°



I PP 2 BL 100.15/50-90°




I PP 2 BT 100.20/50-90°

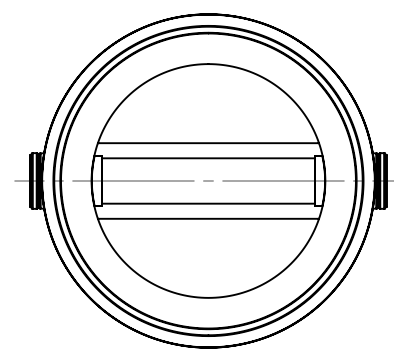


I PP 3 BL 100.15/50-90°

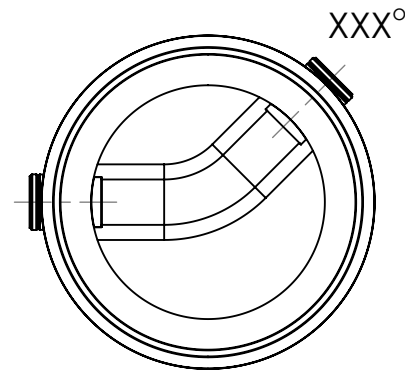
See next sheet for standard I PP base options.  
 Standard base options are available from New Zealand stock.

|   |  |  |  |           |  |                                   |  |  |  |            |  |  |  |
|---|--|--|--|-----------|--|-----------------------------------|--|--|--|------------|--|--|--|
| UNLESS OTHERWISE SPECIFIED:<br>DIMENSIONS ARE IN MILLIMETERS<br>SURFACE FINISH:<br>TOLERANCES:<br>LINEAR:<br>ANGULAR: |  |  |  | FINISH:   |  | DEBUR AND<br>BREAK SHARP<br>EDGES |  | DO NOT SCALE DRAWING   |  | REVISION 1 |  |  |  |
|   |  |  |  |           |  |                                   |  | I PP BASE  |  |            |  |  |  |
|   |  |  |  |           |  |                                   |  |  <b>AUSTRALASIA<br/>MOULDING</b><br>LTD |  |            |  |  |  |
| DRAWN S.McDonald  |  |  |  | SIGNATURE |  | DATE 02.04.20                     |  |  |  |            |  |  |  |
| CHK'D   |  |  |  |           |  |                                   |  |  |  |            |  |  |  |
| APPV'D  |  |  |  |           |  |                                   |  |  |  |            |  |  |  |
| MFG   |  |  |  |           |  |                                   |  |  |  |            |  |  |  |
| Q.A   |  |  |  |           |  | MATERIAL: Polypropylene           |  | DWG NO. ROMOLD DN1000 Manhole Chamber  |  |            |  |  |  |
|   |  |  |  |           |  |                                   |  | SCALE: 1:20  |  |            |  |  |  |
|   |  |  |  |           |  |                                   |  | SHEET 2 OF 9   |  |            |  |  |  |

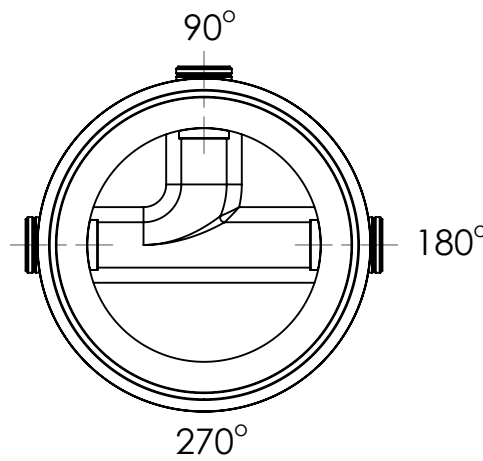
A3



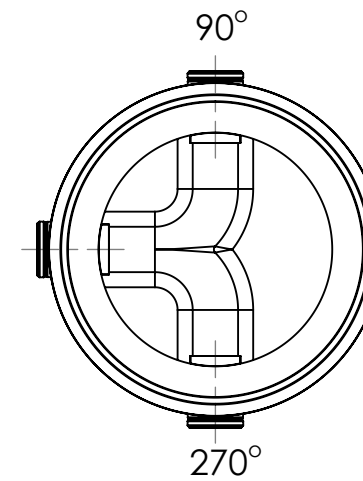
1 PP 1 B



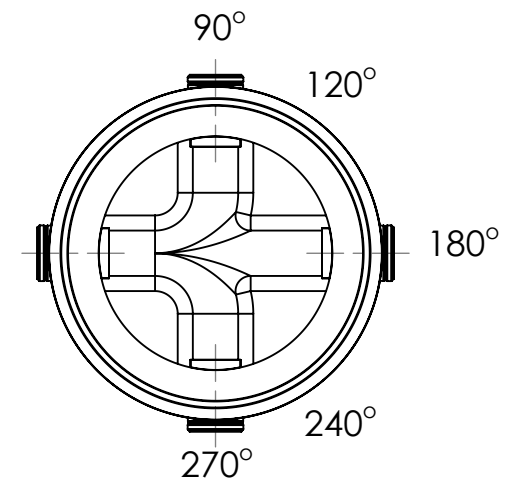
1 PP 1 BB



1 PP 2 BL



1 PP 2 BT



1 PP 3 BL

| Base  | 1 B              | 1 BB |      |      |      |      |      |      |      |      |      |      |      | 2 BL       |             | 2 BT       | 3 BL |     |
|-------|------------------|------|------|------|------|------|------|------|------|------|------|------|------|------------|-------------|------------|------|-----|
| Angle | 180°<br>Straight | 90°  | 105° | 120° | 135° | 150° | 165° | 195° | 210° | 225° | 240° | 255° | 270° | 90° & 180° | 180° & 270° | 90° & 270° | 60°  | 90° |
| DN150 |                  |      |      |      |      |      |      |      |      |      |      |      |      |            |             |            |      |     |
| DN175 |                  |      |      |      |      |      |      |      |      |      |      |      |      |            |             |            |      |     |
| DN225 |                  |      |      |      |      |      |      |      |      |      |      |      |      |            |             |            |      |     |
| DN300 |                  |      |      |      |      |      |      |      |      |      |      |      |      |            |             |            |      |     |
| DN375 |                  |      |      |      |      |      |      |      |      |      |      |      |      |            |             |            |      |     |


Base sockets have +/-3.75° of angular tolerance (+/-7.5° across 2 sockets).

1 B & 1 BB bases can meet any angle of inlet from 90° to 270°.

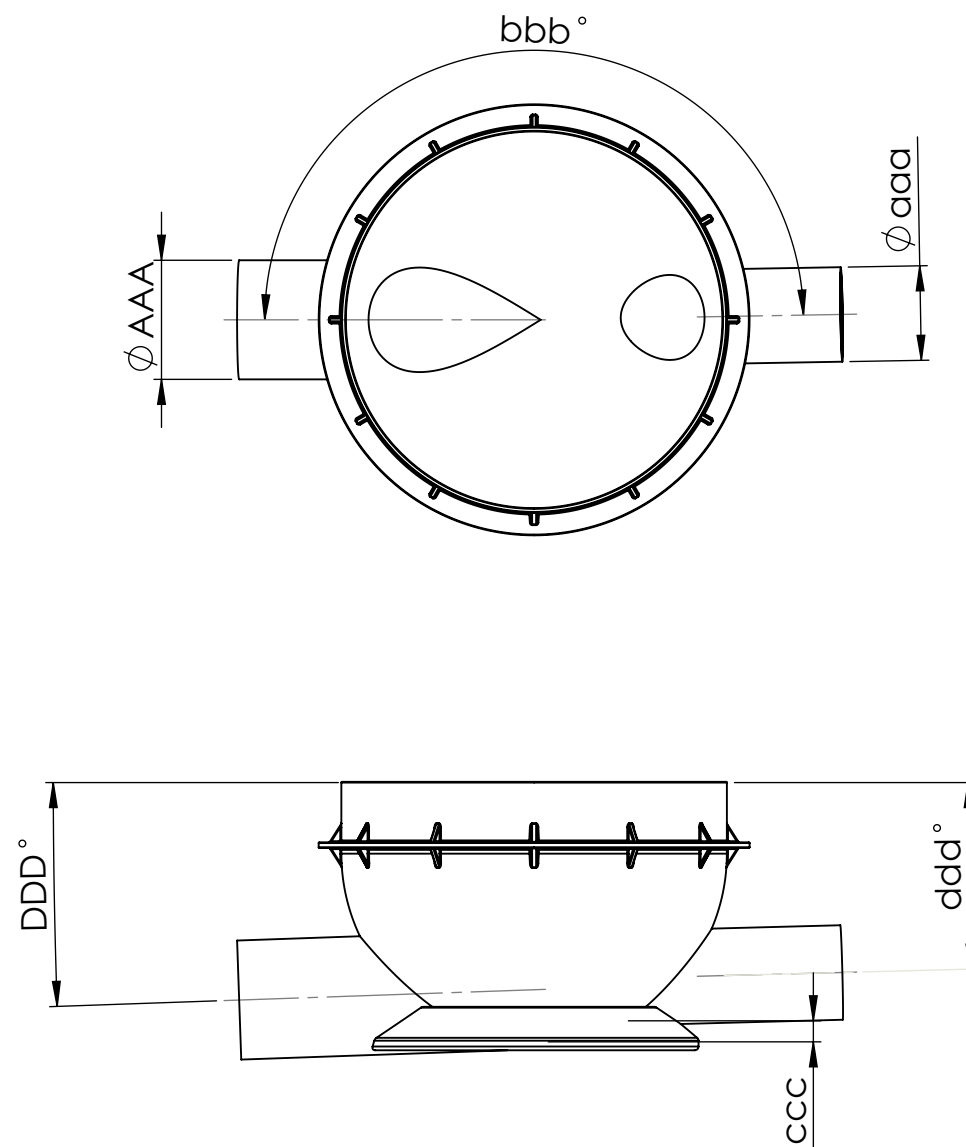
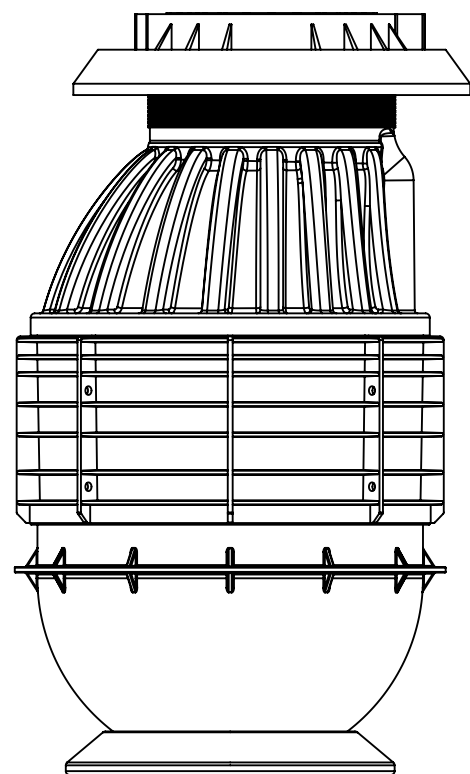
3 BL bases at 60° have inlets at 120°, 180° & 240°.

For modified bases see next sheet.

Standard base options are available from New Zealand stock.

|   |  |      |  |           |  |                                   |  |   |  |            |  |
|---|--|------|--|-----------|--|-----------------------------------|--|---|--|------------|--|
| UNLESS OTHERWISE SPECIFIED:<br>DIMENSIONS ARE IN MILLIMETERS<br>SURFACE FINISH:<br>TOLERANCES:<br>LINEAR:<br>ANGULAR: |  |      |  | FINISH:   |  | DEBUR AND<br>BREAK SHARP<br>EDGES |  | DO NOT SCALE DRAWING  |  | REVISION 1 |  |
| BASE OPTIONS  |  |      |  |           |  |                                   |  |   |  |            |  |
| DRAWN   |  | NAME |  | SIGNATURE |  | DATE                              |  |  <b>AUSTRALASIA<br/>MOULDING<br/>LTD</b> |  |            |  |
| CHK'D   |  |      |  |           |  |                                   |  |   |  |            |  |
| APPV'D  |  |      |  |           |  |                                   |  |   |  |            |  |
| MFG   |  |      |  |           |  |                                   |  |   |  |            |  |
| Q.A   |  |      |  |           |  |                                   |  |   |  |            |  |
|   |  |      |  |           |  | MATERIAL: Polypropylene           |  | DWG NO. ROMOLD DN1000 Manhole Chamber   |  |            |  |
|   |  |      |  |           |  |                                   |  | SCALE: 1:20   |  |            |  |
|   |  |      |  |           |  |                                   |  | SHEET 3 OF 9  |  |            |  |
|   |  |      |  |           |  |                                   |  | A3  |  |            |  |






ROMOLD DN1000 Manhole Chamber  
with polyethylene Round-Bottom (RB) base.  
Base provides a blank template for manhole  
solutions.  
Pipelines with PE pipe, different pipe sizes, large  
pipes, steep grades, or non-standard angles  
can be catered for.  
Fabricated in New Zealand.

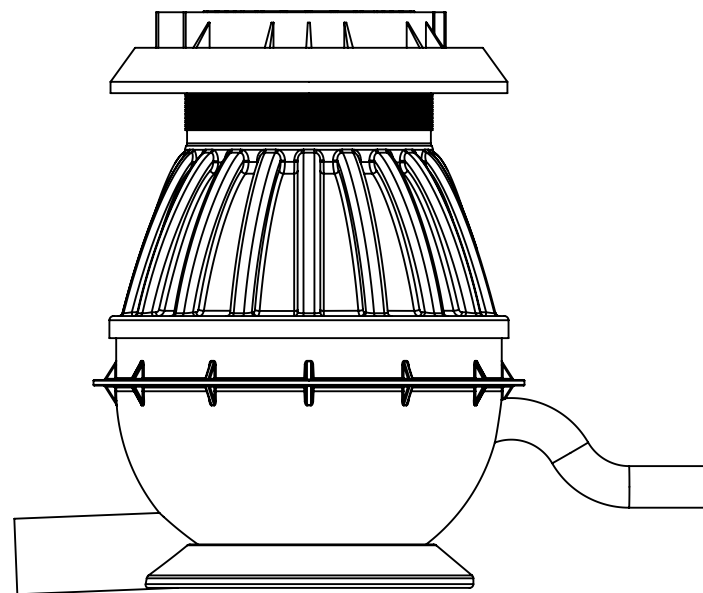
| Fabricated RB Base Specification |  |
|----------------------------------|--|
| Manhole Number                   |  |
| Outlet                           |  |
| Pipe type, size, SDR             |  |
| Grade                            |  |
| Inlet 1                          |  |
| Pipe type, size, SDR             |  |
| Angle                            |  |
| Invert level                     |  |
| Grade                            |  |
| Inlet 2                          |  |
| Pipe type, size, SDR             |  |
| Angle                            |  |
| Invert level                     |  |
| Grade                            |  |
| Inlet 3                          |  |
| Pipe type, size, SDR             |  |
| Angle                            |  |
| Invert level                     |  |
| Grade                            |  |
| Inlet 4                          |  |
| Pipe type, size, SDR             |  |
| Angle                            |  |
| Invert level                     |  |
| Grade                            |  |
| Inlet 5                          |  |
| Pipe type, size, SDR             |  |
| Angle                            |  |
| Invert level                     |  |
| Grade                            |  |

RB 100/70 BS - round bottom PE base, 700mm high  
RB 100/100 BS - round bottom PE base, 1000mm high

Round bottom base also allows solutions for pressure sewer or pump station discharge chambers. See next sheet for typical detail.

Contact us to learn more.

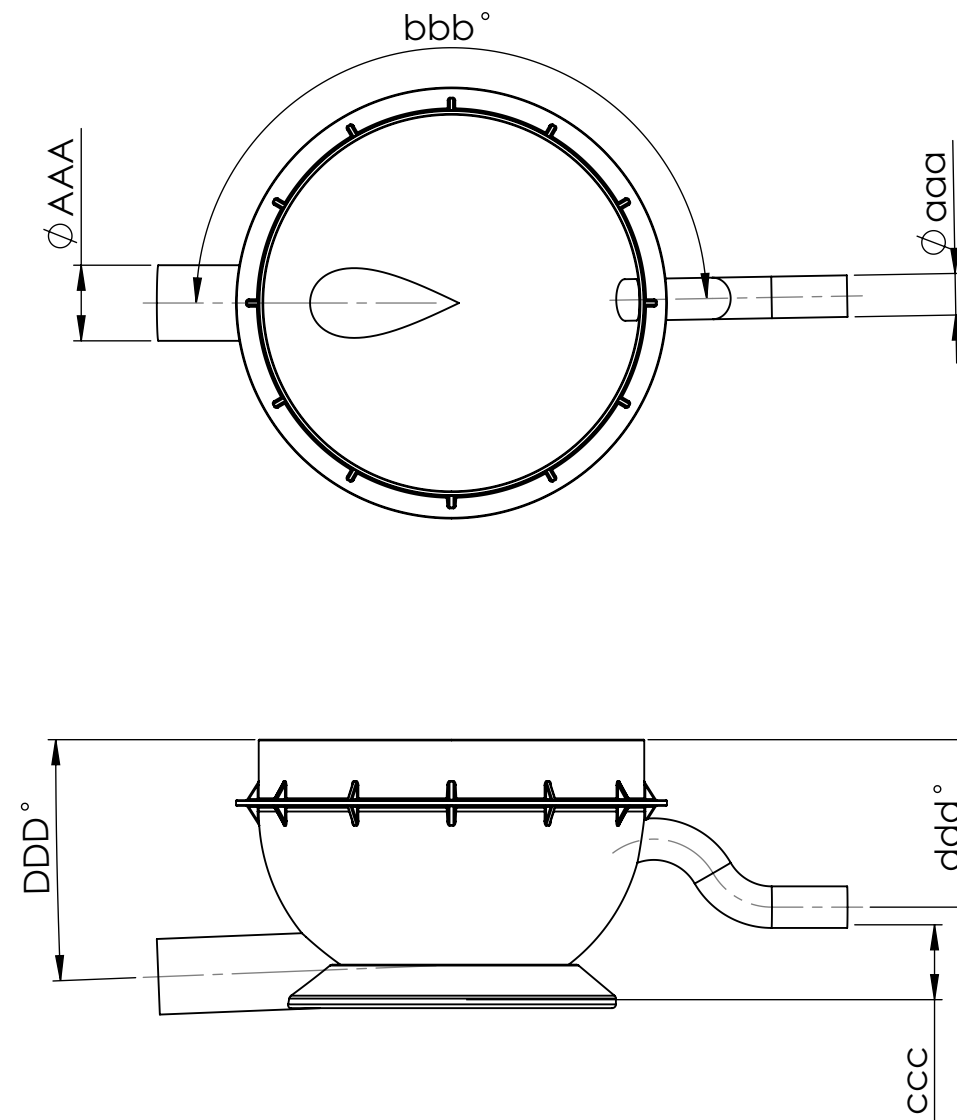
|   |  |  |  |           |  |   |  |   |  |            |  |
|---|--|--|--|-----------|--|---|--|---|--|------------|--|
| UNLESS OTHERWISE SPECIFIED:<br>DIMENSIONS ARE IN MILLIMETERS<br>SURFACE FINISH:<br>TOLERANCES:<br>LINEAR:<br>ANGULAR: |  |  |  | FINISH:   |  | DEBUR AND<br>BREAK SHARP<br>EDGES                           |  | DO NOT SCALE DRAWING  |  | REVISION 1 |  |
| FABRICATED ROUND BOTTOM BASE  |  |  |  |           |  |   |  |   |  |            |  |
| DRAWN S.McDonald  |  |  |  | SIGNATURE |  | DATE 02.04.20   |  |  <b>AUSTRALASIA<br/>MOULDING<br/>LTD</b> |  |            |  |
| CHK'D   |  |  |  |           |  |   |  |   |  |            |  |
| APPV'D  |  |  |  |           |  |   |  |   |  |            |  |
| MFG   |  |  |  |           |  |   |  |   |  |            |  |
| Q.A   |  |  |  |           |  |   |  |   |  |            |  |
|   |  |  |  |           |  | MATERIAL:<br>Polyethylene Base<br>Polypropylene Upper Units |  | DWG NO.<br>ROMOLD DN1000 Manhole Chamber  |  |            |  |
|   |  |  |  |           |  |   |  | SCALE:1:20  |  |            |  |
|   |  |  |  |           |  |   |  | SHEET 5 OF 9  |  |            |  |
|   |  |  |  |           |  |   |  | A3  |  |            |  |



ROMOLD DN1000 Discharge Chamber  
with polyethylene Round-Bottom (RB) base.


Double bend on inlet to maintain a full line  
from pump station. Outlet sized to suit connection  
to gravity sewer.

Fabricated in New Zealand.

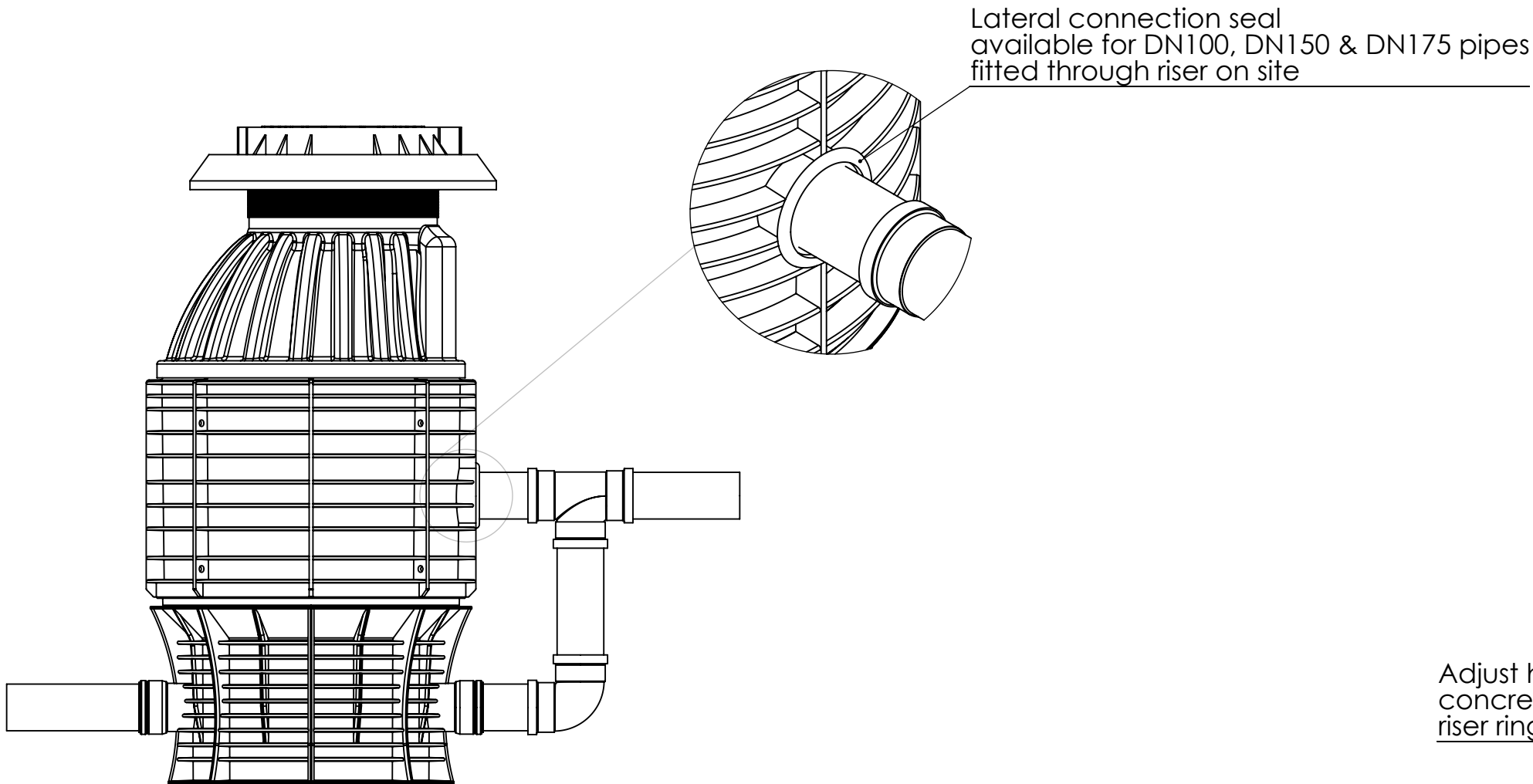


| Discharge Chamber Base Specification |  |
|--------------------------------------|--|
| Manhole Number                       |  |
| Outlet                               |  |
| Pipe type, size, SDR                 |  |
| Grade                                |  |
| Discharge Inlet                      |  |
| Pipe type, size, SDR                 |  |
| Angle                                |  |
| Invert level                         |  |
| Grade                                |  |
| Inlet 2                              |  |
| Pipe type, size, SDR                 |  |
| Angle                                |  |
| Invert level                         |  |
| Grade                                |  |

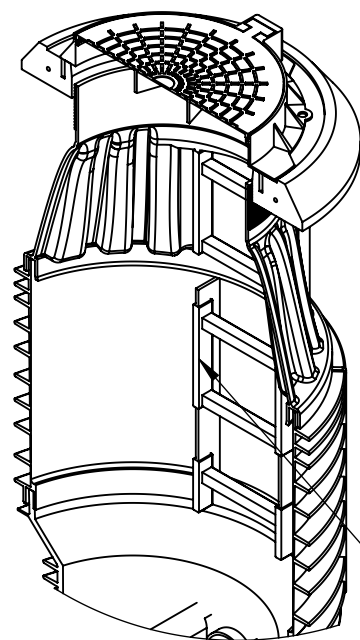
Contact us to learn more.

|   |            |           |          |   |  |                                   |  |          |              |
|---|------------|-----------|----------|---|--|-----------------------------------|--|----------|--------------|
| UNLESS OTHERWISE SPECIFIED:<br>DIMENSIONS ARE IN MILLIMETERS<br>SURFACE FINISH:<br>TOLERANCES:<br>LINEAR:<br>ANGULAR: |            |           |          | FINISH:   |  | DEBUR AND<br>BREAK SHARP<br>EDGES | DO NOT SCALE DRAWING   | REVISION | 1            |
|   |            |           |          |   |  |                                   | DISCHARGE CHAMBER  |          |              |
| DRAWN   | NAME       | SIGNATURE | DATE     |   |  |                                   | <br><b>AUSTRALASIA<br/>MOULDING<br/>LTD</b> |          |              |
| CHK'D   | S.McDonald |           | 02.04.20 |   |  |                                   |  |          |              |
| APPV'D  |            |           |          |   |  |                                   |  |          |              |
| MFG   |            |           |          |   |  |                                   |  |          |              |
| Q.A   |            |           |          |   |  |                                   |  |          |              |
|   |            |           |          | MATERIAL:<br>Polyethylene Base<br>Polypropylene Upper Units |  |                                   | DWG NO.<br>ROMOLD DN1000 Manhole Chamber   |          | A3           |
|   |            |           |          |   |  |                                   | SCALE:1:20   |          | SHEET 6 OF 9 |

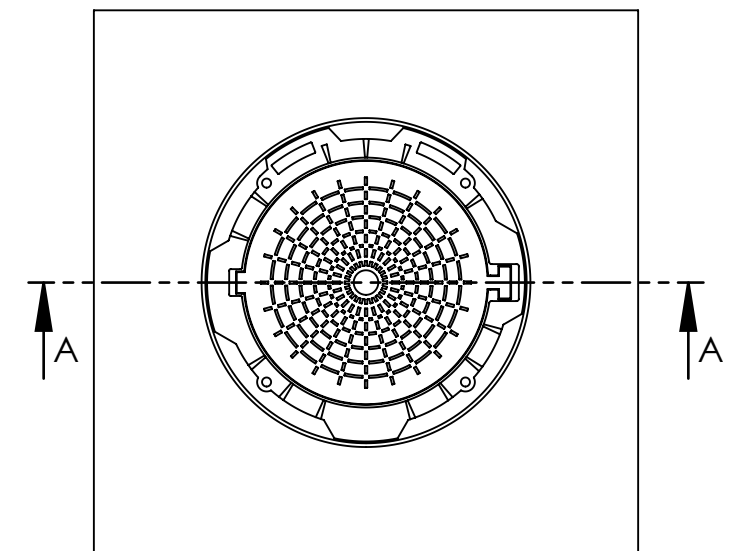




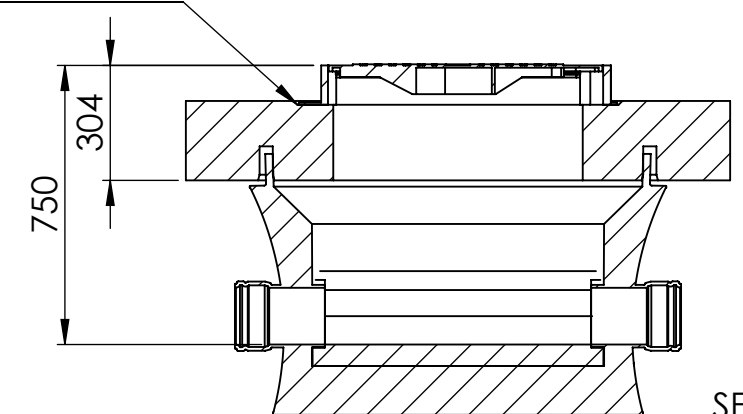
Typical external drop pipe



Manhole risers and cone come with reinforced polypropylene ladder elements fitted as standard. The ladder has the same durability as for the chamber. If a manhole without ladder is required the elements can easily be removed on site with simple tools.




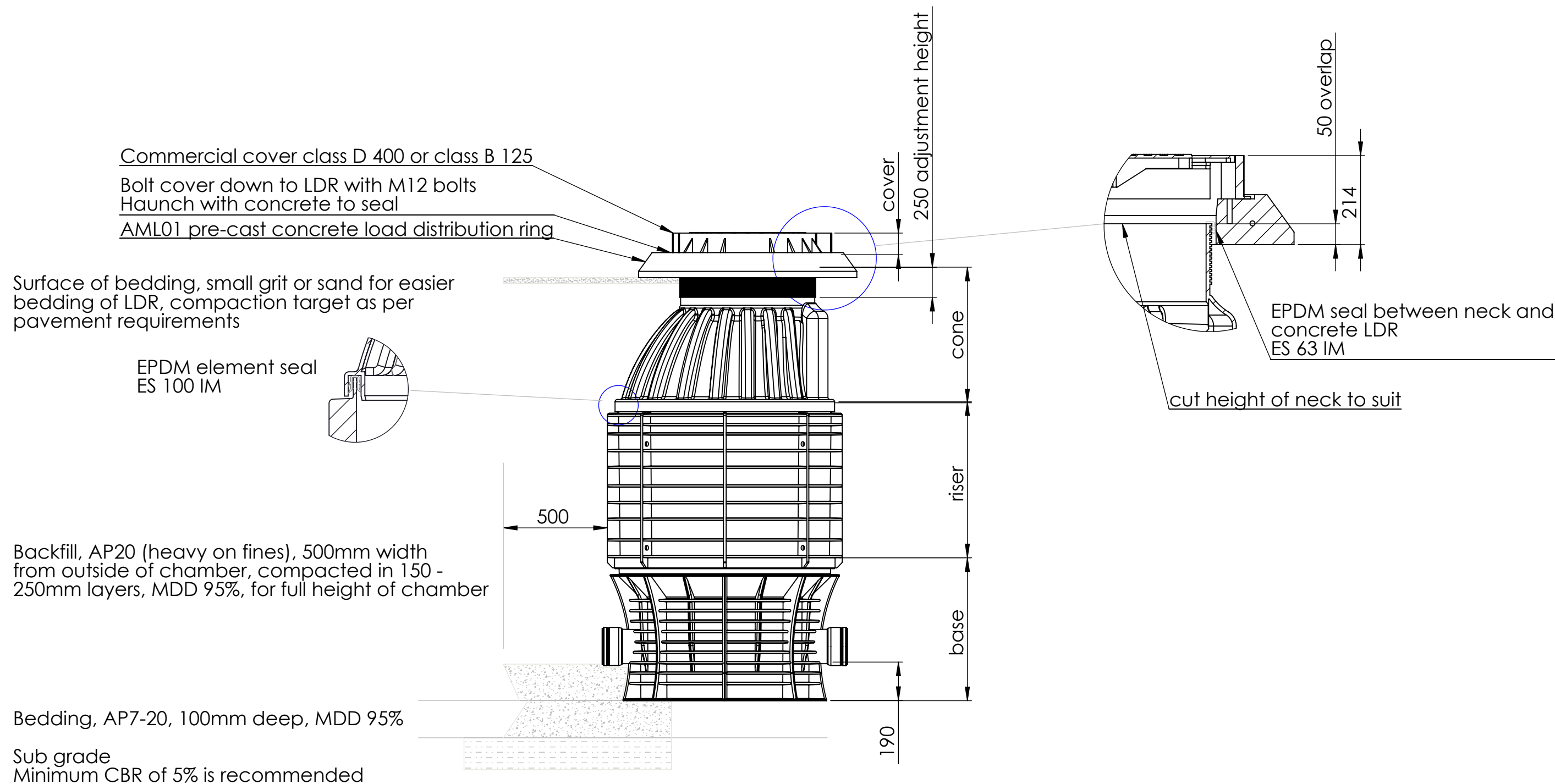
Adjust height with concrete manhole riser ring




SECTION A-A

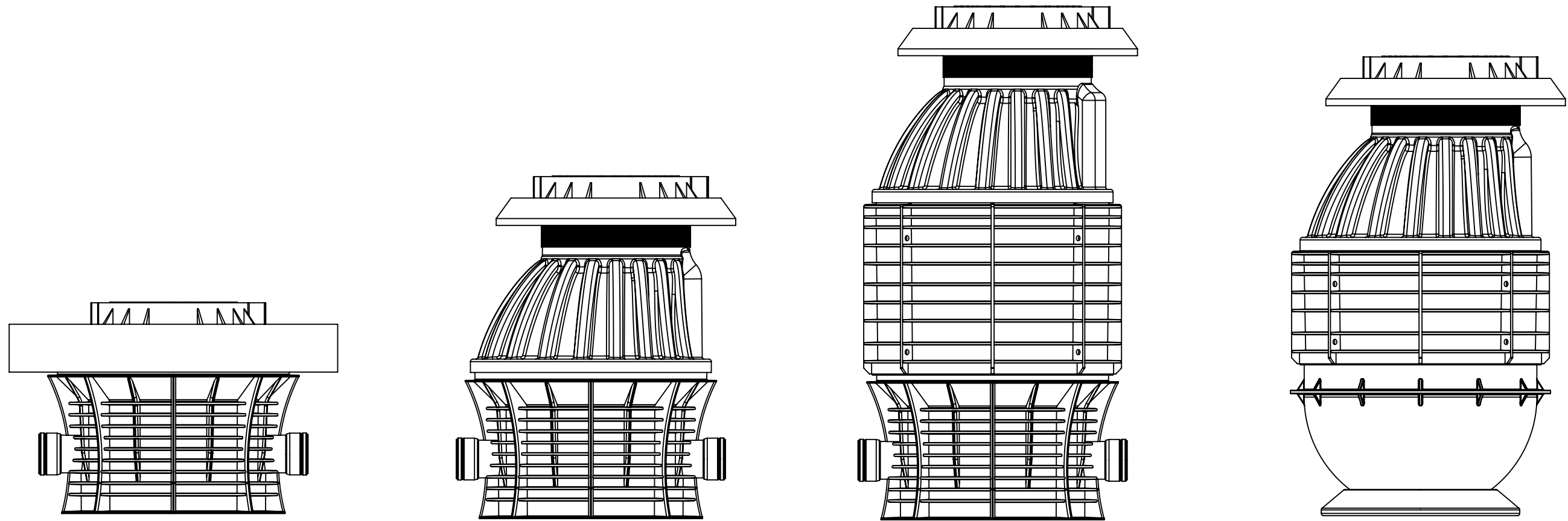
Concrete cover for low install height  
210mm, 1440 x 1440mm reinforced concrete cover  
Suitable for mounting directly to ROMOLD DN1000  
I PP base to provide a lower installation depth

|   |  |            |  |           |  |                                   |  |                      |  |               |  |                               |  |   |  |
|---|--|------------|--|-----------|--|-----------------------------------|--|----------------------|--|---------------|--|-------------------------------|--|---|--|
| UNLESS OTHERWISE SPECIFIED:<br>DIMENSIONS ARE IN MILLIMETERS<br>SURFACE FINISH:<br>TOLERANCES:<br>LINEAR:<br>ANGULAR: |  |            |  | FINISH:   |  | DEBUR AND<br>BREAK SHARP<br>EDGES |  | DO NOT SCALE DRAWING |  | REVISION      |  | 1                             |  |   |  |
|   |  |            |  |           |  |                                   |  |                      |  |               |  | ADDITIONAL DETAILS            |  |   |  |
| DRAWN   |  | S.McDonald |  | SIGNATURE |  | DATE                              |  | 02.04.20             |  |               |  |                               |  | <div> AUSTRALASIA<br/>MOULDING<br/>LTD</div> |  |
| CHK'D   |  |            |  |           |  |                                   |  |                      |  |               |  |                               |  |   |  |
| APPV'D  |  |            |  |           |  |                                   |  |                      |  |               |  |                               |  |   |  |
| MFG   |  |            |  |           |  |                                   |  |                      |  |               |  |                               |  |   |  |
| Q.A   |  |            |  |           |  |                                   |  |                      |  |               |  |                               |  |   |  |
|   |  |            |  |           |  |                                   |  | MATERIAL:            |  | Polypropylene |  | DWG NO.                       |  | A3  |  |
|   |  |            |  |           |  |                                   |  |                      |  |               |  | ROMOLD DN1000 Manhole Chamber |  |   |  |
|   |  |            |  |           |  |                                   |  |                      |  |               |  | SCALE:1:20                    |  | SHEET 7 OF 9  |  |




|   |  |      |  |           |  |                                   |  |                      |  |               |  |                               |  |
|---|--|------|--|-----------|--|-----------------------------------|--|----------------------|--|---------------|--|-------------------------------|--|
| UNLESS OTHERWISE SPECIFIED:<br>DIMENSIONS ARE IN MILLIMETERS<br>SURFACE FINISH:<br>TOLERANCES:<br>LINEAR:<br>ANGULAR: |  |      |  | FINISH:   |  | DEBUR AND<br>BREAK SHARP<br>EDGES |  | DO NOT SCALE DRAWING |  | REVISION      |  | 1                             |  |
|   |  |      |  |           |  |                                   |  |                      |  |               |  | INSTALLATION                  |  |
|                                  |  |      |  |           |  |                                   |  |                      |  |               |  |                               |  |
| DRAWN   |  | NAME |  | SIGNATURE |  | DATE                              |  |                      |  |               |  |                               |  |
| CHK'D   |  |      |  |           |  | 02.04.20                          |  |                      |  |               |  |                               |  |
| APPV'D  |  |      |  |           |  |                                   |  |                      |  |               |  |                               |  |
| MFG   |  |      |  |           |  |                                   |  |                      |  |               |  |                               |  |
| Q.A   |  |      |  |           |  |                                   |  | MATERIAL:            |  | Polypropylene |  | DWG NO.                       |  |
|   |  |      |  |           |  |                                   |  |                      |  |               |  | ROMOLD DN1000 Manhole Chamber |  |
|   |  |      |  |           |  |                                   |  |                      |  |               |  | A3                            |  |
|   |  |      |  |           |  |                                   |  |                      |  |               |  |                               |  |
|   |  |      |  |           |  |                                   |  |                      |  | SCALE:1:20    |  | SHEET 8 OF 9                  |  |





Available in DXF or DWG formats.  
Other drawings available. Please enquire.

|   |            |           |          |         |  |                                   |  |              |   |
|---|------------|-----------|----------|---------|--|-----------------------------------|--|--------------|---|
| UNLESS OTHERWISE SPECIFIED:<br>DIMENSIONS ARE IN MILLIMETERS<br>SURFACE FINISH:<br>TOLERANCES:<br>LINEAR:<br>ANGULAR: |            |           |          | FINISH: |  | DEBUR AND<br>BREAK SHARP<br>EDGES | DO NOT SCALE DRAWING   | REVISION     | 1 |
|   |            |           |          |         |  |                                   | CAD BLOCKS   |              |   |
|   | NAME       | SIGNATURE | DATE     |         |  |                                   |  AUSTRALASIA<br>MOULDING<br>LTD |              |   |
| DRAWN   | S.McDonald |           | 02.04.20 |         |  |                                   |  |              |   |
| CHK'D   |            |           |          |         |  |                                   |  |              |   |
| APPV'D  |            |           |          |         |  |                                   |  |              |   |
| MFG   |            |           |          |         |  |                                   |  |              |   |
| Q.A   |            |           |          |         |  | MATERIAL:<br>Polypropylene        | DWG NO.<br>ROMOLD DN1000 Manhole Chamber   | A3           |   |
|   |            |           |          |         |  |                                   | SCALE:1:20   | SHEET 9 OF 9 |   |