


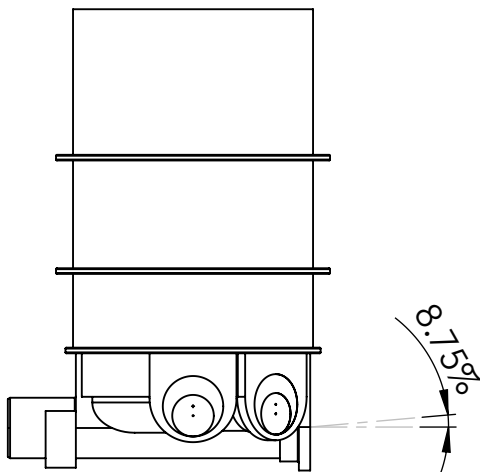
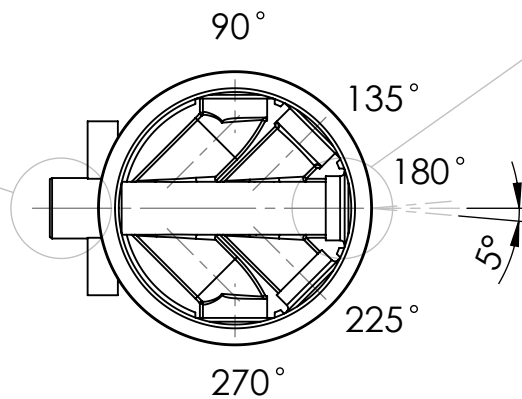
ROMOLD DN625 maintenance chambers are approved to EN 13598-2.
 Maximum depth to invert is 3m.
 Maximum groundwater height is 2m.
 Suitable for Class D traffic loading (meeting HN-HO-72).
 Base has outlet spigot applicable for PVC pipe connection, sizes of DN150, DN225 & DN300, or DN100 when using level reducer.
 Pre-benched bases have $\pm 5^\circ$ of angular alignment per socket.
 Maximum pipe grade for pre-benched base is 8.75%.
 Fall through pre-benched base is 2%.
 Custom bases are available for larger pipe sizes, different pipe materials or inlet arrangements that are outside of our pre-benched options.

UNLESS OTHERWISE SPECIFIED: DIMENSIONS ARE IN MILLIMETERS SURFACE FINISH: TOLERANCES: LINEAR: ANGULAR:				FINISH:		DEBUR AND BREAK SHARP EDGES		DO NOT SCALE DRAWING		REVISION		1	
								GENERAL LAYOUT					
	NAME		SIGNATURE		DATE				<div> AUSTRALASIA MOULDING LTD</div>				
DRAWN	S.McDonald				07.04.20								
CHK'D													
APPV'D													
MFG													
Q.A													
							MATERIAL: Polyethylene		DWG NO.		A3		
									ROMOLD DN625 Maintenance Chamber				
									SCALE: 1:20		SHEET 1 OF 7		



Outlet PE spigot sized for direct connection of RRJ PVC pipe.

Outlet can be replaced with other pipe sizes if required.



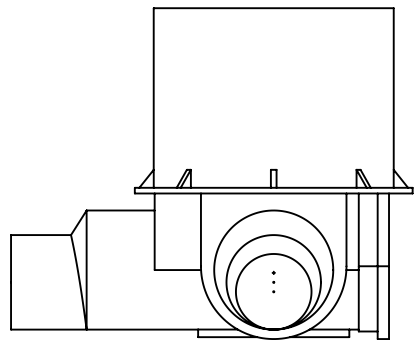
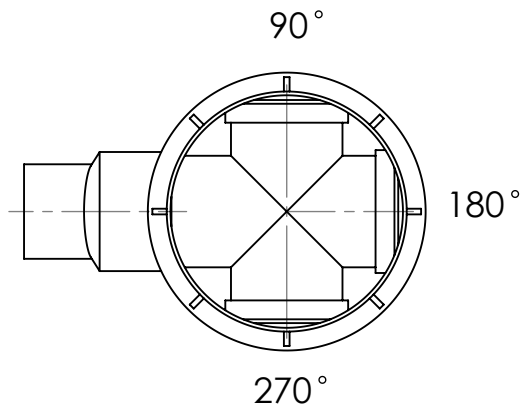
5 B 63.15/120

5 B 63.15 chamber base
DN150 outlet spigot.
5 inlets at 45° spacing for DN100 or DN150 PVC.
Inlet ports at 90, 135, 225 & 270° are at 75mm above invert level.
2% grade through main channel.
900mm or 1200mm heights available.
"BI" chamber comes without seals.
"BID" chamber comes with DN150 seal fitted at the 180° position.

Seal sizes available from stock include (mm): 32, 40, 50, 63, 75, 90, 110 (DN100), 125, 140, 160 (DN150), 200 (DN175), 225, 250 (DN225), 315 (DN300).

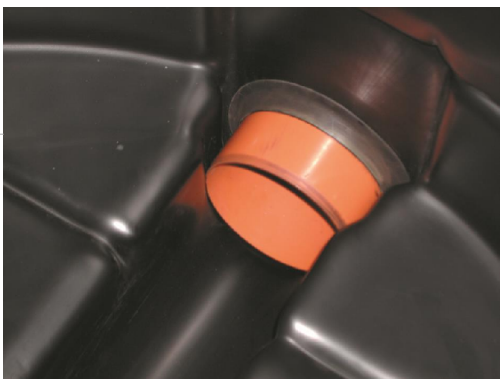
Standard base options are available from stock.

For custom bases see next sheet.



3 B 63.30.25/85

3 B 63.30.25 chamber base
DN225 & DN300 stepped outlet spigot.
3 inlets at 90° spacing for DN100 - DN300 PVC.
Inlet ports at invert level.
2% grade through main channel.
850mm height.




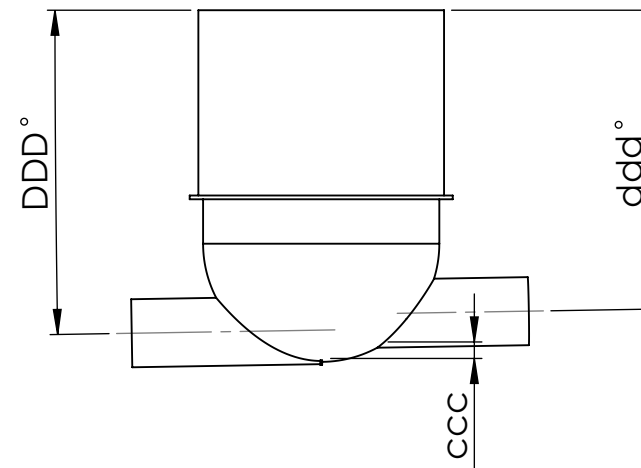
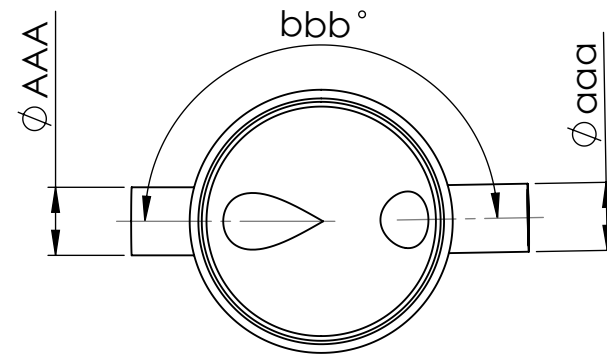
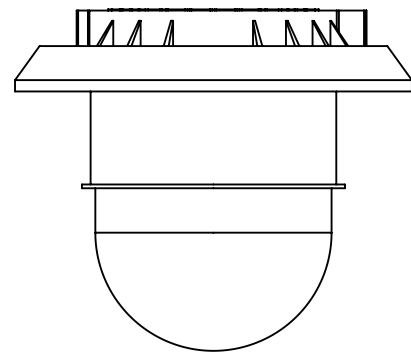
Inlet pipes connect with ROMOLD seal through inlet port drilled on site.

Seal provides +/-5° angular tolerance. Up to 8.75% pipe grade.

Seals designed to accept PVC pipe to AS/NZS 1254 & AS/NZS 1260.

3 BL 63.20.15/75 BI chamber base - stepped outlet for DN150 & DN175, 3 inlets at 90° spacing. Inlet ports at invert level.

UNLESS OTHERWISE SPECIFIED: DIMENSIONS ARE IN MILLIMETERS SURFACE FINISH: TOLERANCES: LINEAR: ANGULAR:				FINISH:		DEBUR AND BREAK SHARP EDGES		DO NOT SCALE DRAWING		REVISION		1			
BASE OPTIONS															
<div> AUSTRALASIA MOULDING LTD</div>															
DRAWN	NAME		SIGNATURE		DATE				<div>DWG NO. ROMOLD DN625 Maintenance Chamber</div>					A3	
CHK'D															
APP'VD															
MFG															
Q.A															
						MATERIAL:		Polyethylene							
SCALE:1:20														SHEET 2 OF 7	



ROMOLD DN625 Maintenance Chamber with polyethylene Round-Bottom (RB) base. Base provides a blank template for solutions. Pipelines with PE pipe, different pipe sizes, large pipes, steep grades, or non-standard angles can be catered for. Fabricated in New Zealand.

Pre-benched chambers can also be modified to include inlet and outlet spigot sizes to suit design. Please enquire.

RB 63/90 - round bottom PE base, 900mm high

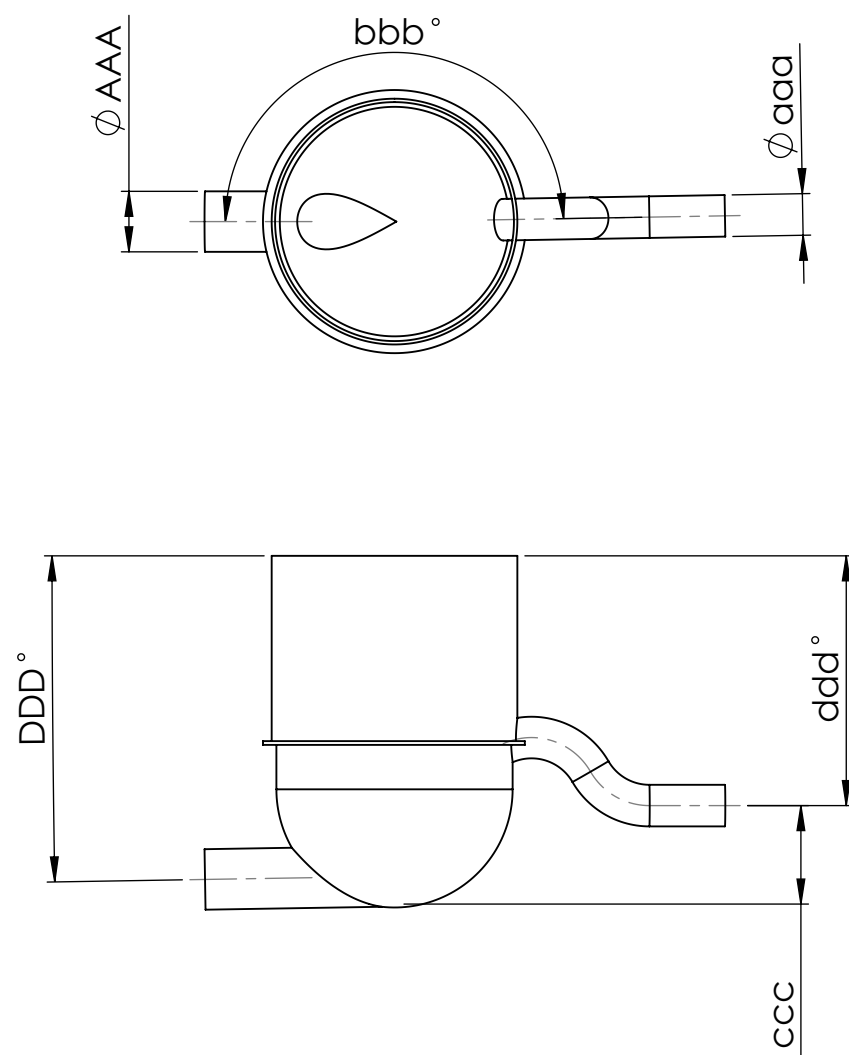
Round bottom base also allows solutions for pressure sewer or pump station discharge chambers. See next sheet for typical detail.

Contact us to learn more.

Fabricated RB Base Specification	
Manhole Number	
Outlet	
Pipe type, size, SDR	
Grade	
Inlet 1	
Pipe type, size, SDR	
Angle	
Invert level	
Grade	
Inlet 2	
Pipe type, size, SDR	
Angle	
Invert level	
Grade	
Inlet 3	
Pipe type, size, SDR	
Angle	
Invert level	
Grade	
Inlet 4	
Pipe type, size, SDR	
Angle	
Invert level	
Grade	
Inlet 5	
Pipe type, size, SDR	
Angle	
Invert level	
Grade	


UNLESS OTHERWISE SPECIFIED: DIMENSIONS ARE IN MILLIMETERS SURFACE FINISH: TOLERANCES: LINEAR: ANGULAR:				FINISH:		DEBUR AND BREAK SHARP EDGES		DO NOT SCALE DRAWING		REVISION 1																														
<table> <tr> <td>DRAWN</td> <td>S.McDonald</td> <td>SIGNATURE</td> <td>DATE</td> <td>07.04.20</td> </tr> <tr> <td>CHK'D</td> <td></td> <td></td> <td></td> <td></td> </tr> <tr> <td>APPV'D</td> <td></td> <td></td> <td></td> <td></td> </tr> <tr> <td>MFG</td> <td></td> <td></td> <td></td> <td></td> </tr> <tr> <td>Q.A</td> <td></td> <td></td> <td></td> <td></td> </tr> </table>										DRAWN	S.McDonald	SIGNATURE	DATE	07.04.20	CHK'D					APPV'D					MFG					Q.A					MATERIAL: Polyethylene		DWG NO. ROMOLD DN625 Maintenance Chamber SCALE: 1:20		A3 SHEET 3 OF 7	
										DRAWN	S.McDonald	SIGNATURE	DATE	07.04.20																										
										CHK'D																														
										APPV'D																														
										MFG																														
Q.A																																								

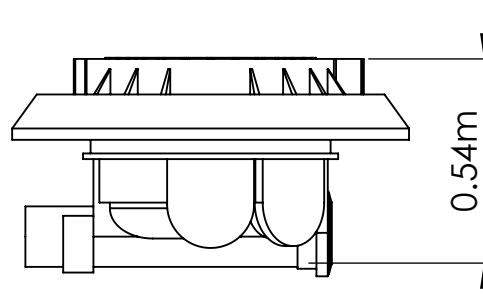
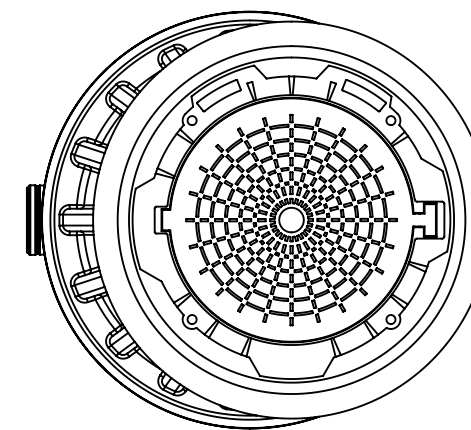
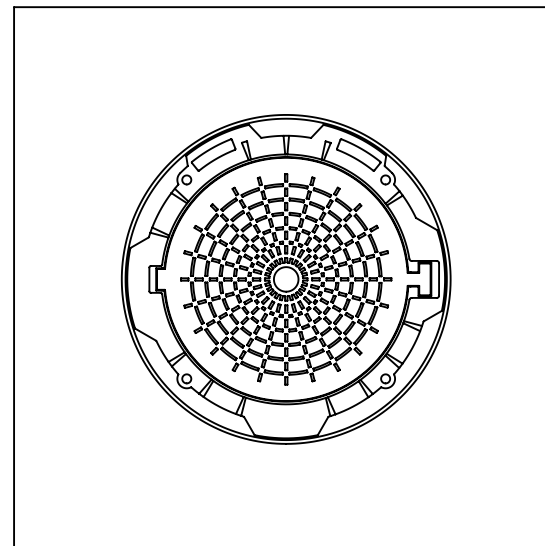
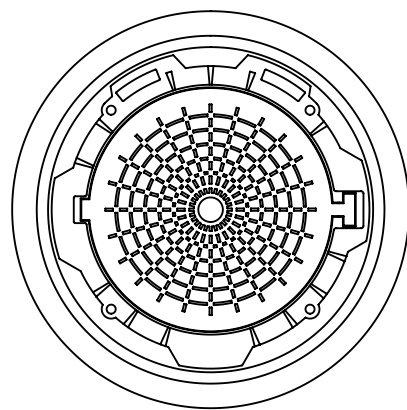




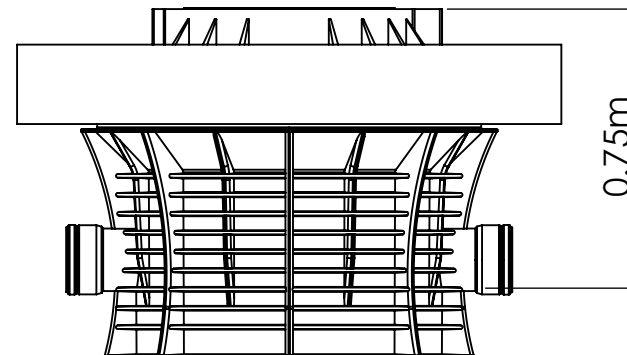
Discharge Chamber Base Specification	
Manhole Number	
Outlet	
Pipe type, size, SDR	
Grade	
Discharge Inlet	
Pipe type, size, SDR	
Angle	
Invert level	
Grade	
Inlet 2	
Pipe type, size, SDR	
Angle	
Invert level	
Grade	

Contact us to learn more.

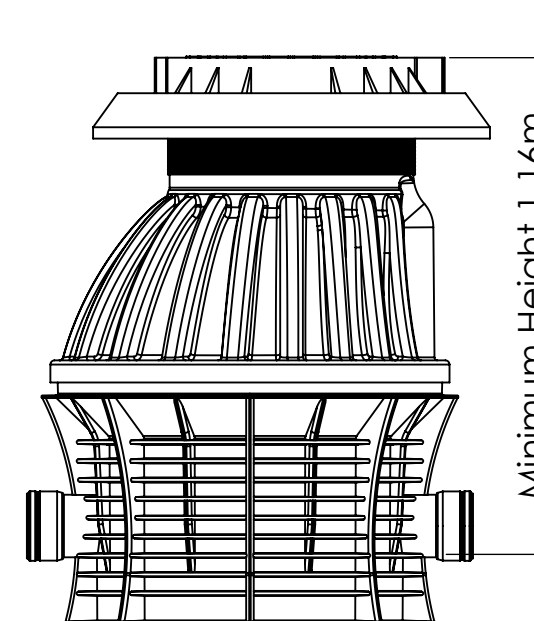
UNLESS OTHERWISE SPECIFIED: DIMENSIONS ARE IN MILLIMETERS SURFACE FINISH: TOLERANCES: LINEAR: ANGULAR:				FINISH:		DEBUR AND BREAK SHARP EDGES		DO NOT SCALE DRAWING		REVISION		1	
								DISCHARGE CHAMBER					
<div> AUSTRALASIA MOULDING LTD</div>													
DRAWN		S.McDonald		SIGNATURE		DATE		07.04.20					
CHK'D													
APP'VD													
MFG													
Q.A.													



ROMOLD DN625 Maintenance Chamber
Minimum height 0.54m



ROMOLD DN1000 Manhole
with concrete cover
Minimum height 0.75m

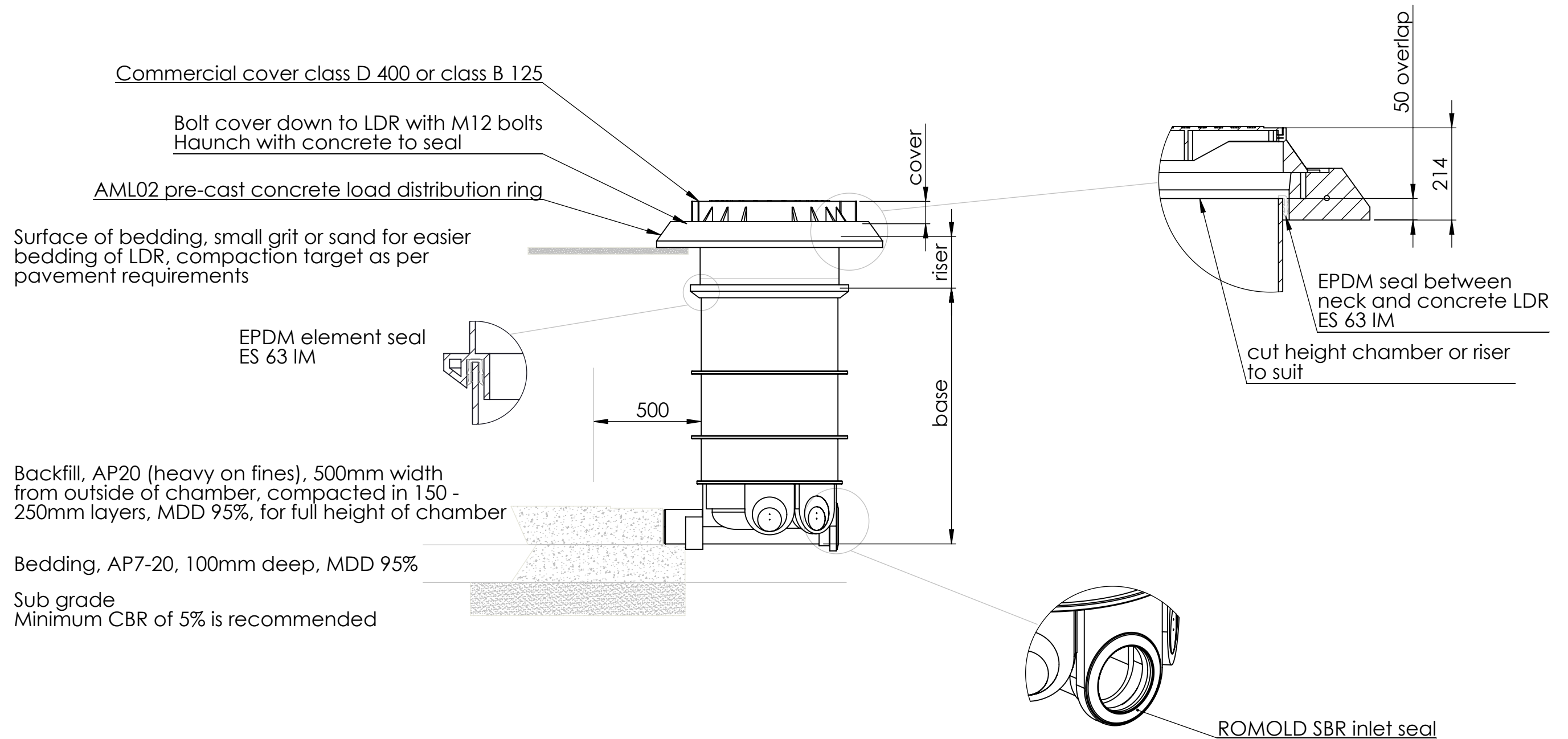


ROMOLD DN1000 Manhole
with PP Cone
Minimum height 1.16m


ROMOLD DN625 maintenance chamber provides the ideal solution for shallow installations with good access and lower cost than for a full manhole chamber.

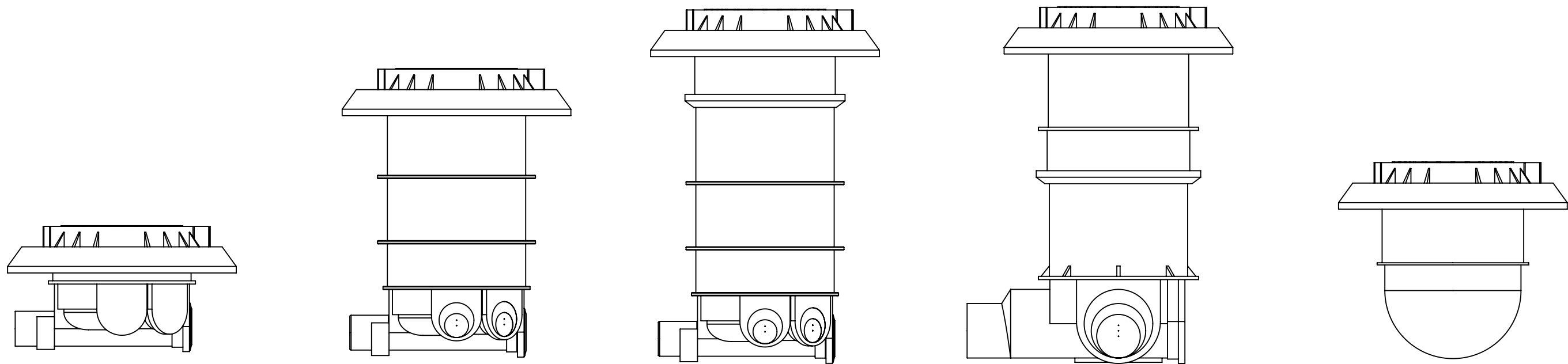
Contact us to learn more.

UNLESS OTHERWISE SPECIFIED: DIMENSIONS ARE IN MILLIMETERS SURFACE FINISH: TOLERANCES: LINEAR: ANGULAR:				FINISH:		DEBUR AND BREAK SHARP EDGES		DO NOT SCALE DRAWING		REVISION		1	
												MINIMUM INSTALLATION DEPTHS	
DRAWN		NAME		SIGNATURE		DATE							
CHK'D						07.04.20							
APPV'D													
MFG													
Q.A													




ROMOLD DN625 maintenance chambers are approved to EN 13598-2.
 Maximum depth to invert is 3m.
 Maximum groundwater height is 2m.
 Suitable for Class D traffic loading (meeting HN-HO-72).
 Base has outlet spigot applicable for PVC pipe connection, sizes of DN150, DN225 & DN300, or DN100 when using level reducer.
 Pre-benched bases have $\pm 5^\circ$ of angular alignment per socket.
 Maximum pipe grade for pre-benched base is 8.75%.
 Fall through pre-benched base is 2%.
 Custom bases are available for larger pipe sizes, different pipe materials or inlet arrangements that are outside of our pre-benched options.

UNLESS OTHERWISE SPECIFIED: DIMENSIONS ARE IN MILLIMETERS SURFACE FINISH: TOLERANCES: LINEAR: ANGULAR:				FINISH:		DEBUR AND BREAK SHARP EDGES		DO NOT SCALE DRAWING		REVISION 1	
								GENERAL LAYOUT			
	NAME	SIGNATURE	DATE			<div> AUSTRALASIA MOULDING LTD</div>					
DRAWN	S.McDonald		07.04.20								
CHK'D											
APPV'D											
MFG											
Q.A				MATERIAL: Polyethylene		DWG NO. ROMOLD DN625 Maintenance Chamber				A3	
						SCALE: 1:20		SHEET 6 OF 7			



Available in DXF or DWG formats.
Other drawings available. Please enquire.

UNLESS OTHERWISE SPECIFIED: DIMENSIONS ARE IN MILLIMETERS SURFACE FINISH: TOLERANCES: LINEAR: ANGULAR:				FINISH:		DEBUR AND BREAK SHARP EDGES	DO NOT SCALE DRAWING		REVISION		1	
							CAD BLOCKS					
	NAME		SIGNATURE		DATE		<div> AUSTRALASIA MOULDING LTD</div>					
DRAWN	S.McDonald				07.04.20							
CHK'D												
APP'VD												
MFG												
Q.A					MATERIAL: Polyethylene		DWG NO. ROMOLD DN625 Maintenance Chamber					A3
								SCALE:1:20		SHEET 7 OF 7		